

## A new *Poinarinius* species (Coleoptera: Bostrichidae: Alitrepaninae) from mid-Cretaceous Burmese amber

Jiří HÁVA<sup>1</sup> & Andrei A. LEGALOV<sup>2</sup>

<sup>1</sup>Private Entomological Laboratory & Collection,  
Rýznerova 37/37, CZ-252 62 Únětice u Prahy, Prague, Czech Republic  
e-mail: jh.dermestidae@volny.cz

<sup>2</sup>Institute of Systematics and Ecology of Animals,  
Siberian Branch, Russian Academy of Sciences, 630091 Novosibirsk, Russia

**Taxonomy, new species, Coleoptera, Bostrichidae, Alitrepaninae, *Poinarinius*, Mid-Cretaceous Burmese amber, Myanmar**

**Abstract.** *Poinarinius decimus* sp. nov. from mid-Cretaceous Burmese amber is described, illustrated and compared with similar species. The new species differs from other *Poinarinius* species in the one broad longitudinal lobe on each elytron.

### INTRODUCTION

The genus *Poinarinius* Legalov, 2018 belongs to the family Bostrichidae, the subfamily Alitrepaninae and is known only from mid-Cretaceous Burmese amber and contains nine species (Legalov & Háva 2022). In the present article is described further a new species.

The amber piece with the described specimen were obtained from mines in the Hukawng Valley of the state of Kachin (Myanmar). The amber of a probable Cenomanian radiometric age was mined from sedimentary beds, indicating that it had been re-deposited. An araucarian tree, possibly *Agathis*, was the source of the amber.

### MATERIAL AND METHODS

The material mentioned is deposited in (JHAC) - Jiří Háva, Private Entomological Laboratory & Collection, Únětice u Prahy, Prague-West, Czech Republic.

Specimen of the species described here are provided with red, printed label with text as follows: „HOLOTYPE *Poinarinius decimus* sp. nov. J. Háva & A. Legalov det. 2023”.

The morphological terminology used in this paper follows Legalov & Háva (2022).

### DESCRIPTION

#### Family Bostrichidae Latreille, 1802

#### Subfamily Alitrepaninae Peng, Jiang, Engel & Wang, 2022

#### Genus *Poinarinius* Legalov, 2018

Syn.: *Alitrepanum* Peng, Jiang, Engel & Wang, 2022.

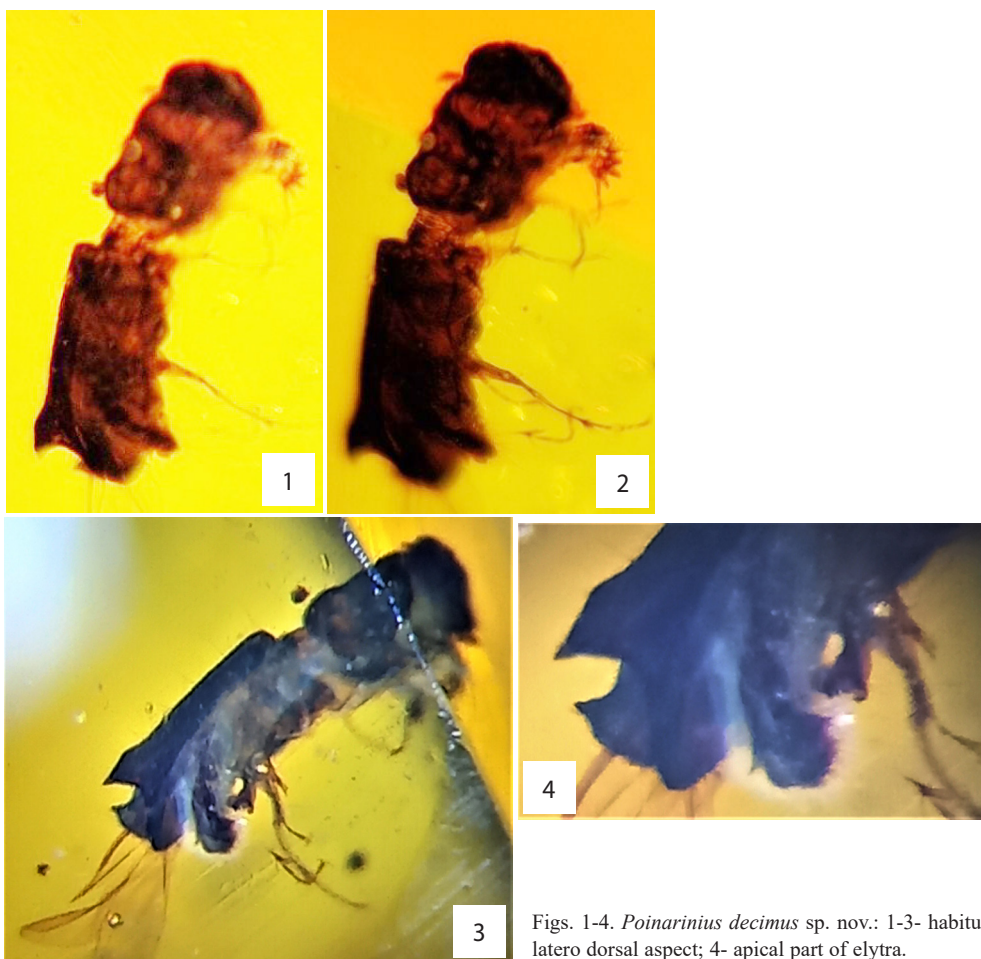
**Type species:** *Poinarinius burmaensis* Legalov, 2018.

*Poinarinius decimus* sp. nov.

(Figs. 1-4)

**Type material.** Holotype (unsexed): No. JH2023/1, Myanmar, Hukawng Valley, lowermost Cenomanian, (JHAC). A complete beetle is included in transparent amber piece. Syninclusion consist of numerous small to minute organic particles, one small Diptera specimen and fragment of leaf.

**Description.** Body brown, length 2.1 mm. Integument covered with erect and semierect long setae. Head as wide as the pronotum apical width. Frons convex, sparsely punctate, covered with rare erect setae. Vertex weakly convex. First antennomere long conical, weakly curved, about 2.3 times as long as wide at apex. Second and third antennomeres conical. Second antennomere about 1.4 times as long as wide at apex, about 0.4 times as long as and about 0.7 times as narrow as first antennomere. Third antennomere subequal in length and width, about 0.6 times as long as and about 0.8 times as narrow as second antennomere. Fourth and fifth



Figs. 1-4. *Poinarinius decimus* sp. nov.: 1-3- habitus latero dorsal aspect; 4- apical part of elytra.

antennomeres wide-conical. Pronotum long as wide at apex, in middle, and at base. Elytra subcylindrical. Elytral intervals narrow, convex, about 0.5 times as narrow as striae width. Striae deep, with small rounded punctation. Elytra with one longitudinal lobes before weak elytral declivity. Metaventrite long as metacoxal cavity length. Metanepisterna long as wide in middle.

**Differential diagnosis.** The new species similar to described species but differs from them by the one broad longitudinal lobe on each elytron.

**Etymology.** From Latin *decimus* (tenth).

ACKNOWLEDGEMENTS. First author very indebted to Jan Hrdlička (Czech Republic) for his important assistance with the inclusions from Burmese amber.

## REFERENCES

- LEGALOV A. A. 2018: New auger beetle (Coleoptera; Bostrichidae) from mid-Cretaceous Burmese amber. *Cretaceous Research* 92: 210-213.
- LEGALOV A. & HÁVA J. 2022: Diversity of auger beetles (Coleoptera; Bostrichidae) as a characteristic feature of the mid-Cretaceous forests with description of seven new species. *Diversity* 14(1114): 1-17.
- PENG Y., JIANG R., SHI C., SONG W., LONG X., ENGEL M. S. & WANG S. 2022: Alitrepaninae, a new subfamily of auger beetles from mid-Cretaceous Kachin amber of northern Myanmar (Coleoptera: Bostrichidae). *Cretaceous Research* 137(105244): 1-6.

*Received: 14.3.2023*

*Accepted: 20.4.2023*

*Printed: 5.10.2023*

